

LCMS Report

Sample Information

LCMS

Acquired by : System Administrator
 Sample Name : Terbinafine hydrochloride-01
 Method File : B 5%-95%-P-new - 2.6min.lcm

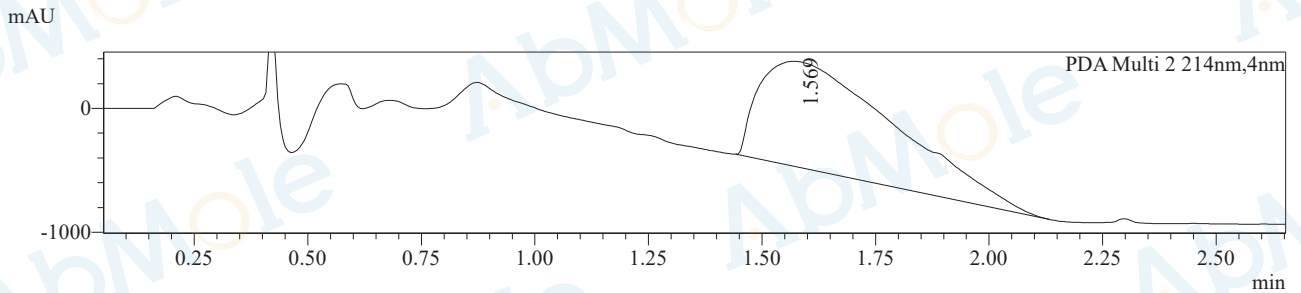
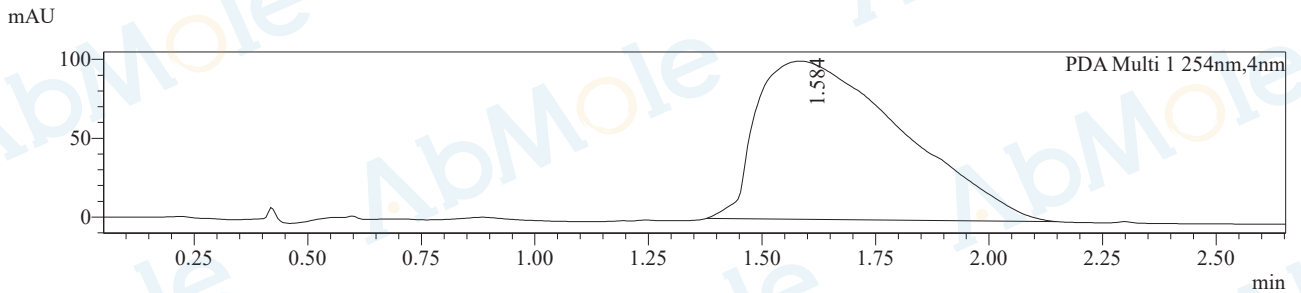
Date Acquired : 2021/7/10 14:32:07

Injection Volume : 4

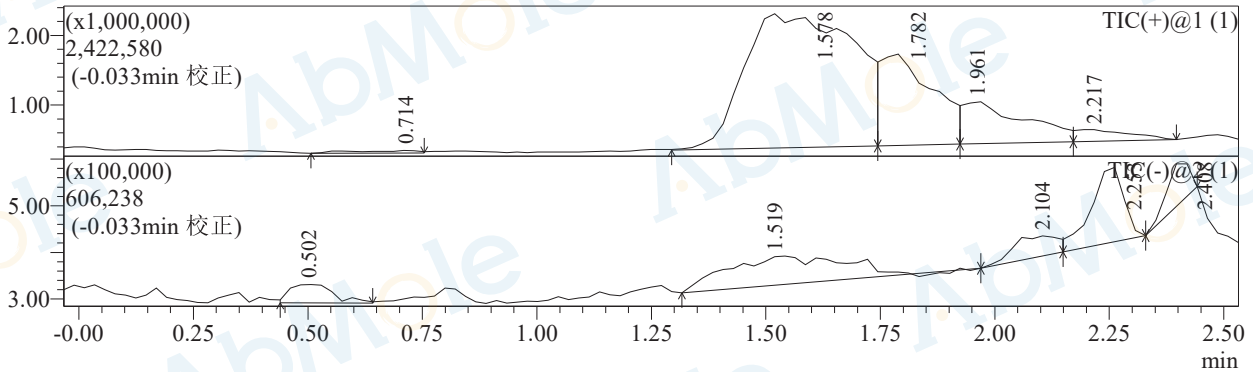
Vial : 105

Column : Waters SunFire C18 50*4.6mm 5um 2.000ml/min 2.6min
 Pump A : 0.1% FA and 10% ACN in H2O
 Pump B : 0.1% FA and 10% H2O in ACN

Chromatogram



段号1



Integration Results for DAD

PDA Ch1 254nm

Peak#	Ret. Time	Height	Area	Area%
1	1.584	100215	2240303	100.000
总计		100215	2240303	100.000

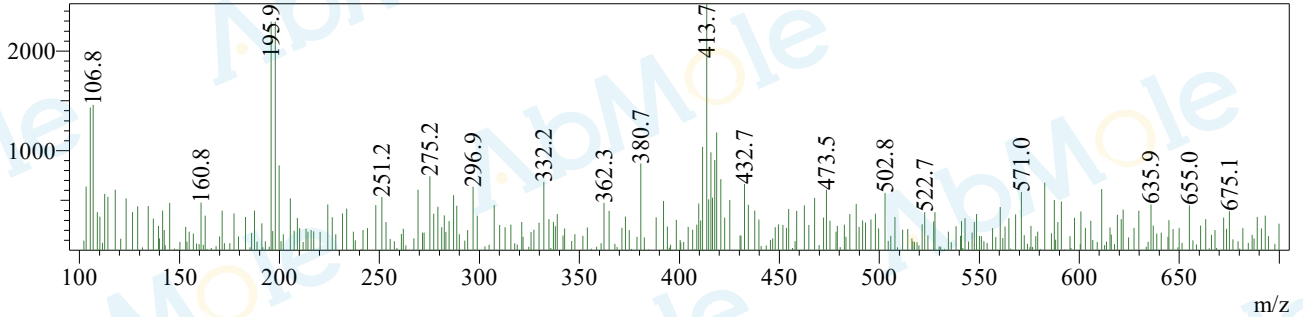
PDA Ch2 214nm

Peak#	Ret. Time	Height	Area	Area%
1	1.569	848329	18196020	100.000

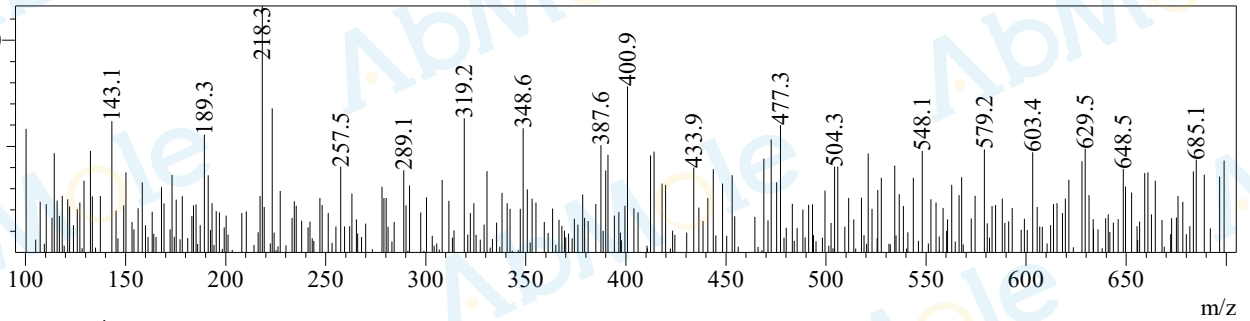
Peak#	Ret. Time	Height	Area	Area%
总计		848329	18196020	100.000

Mass Spectrum

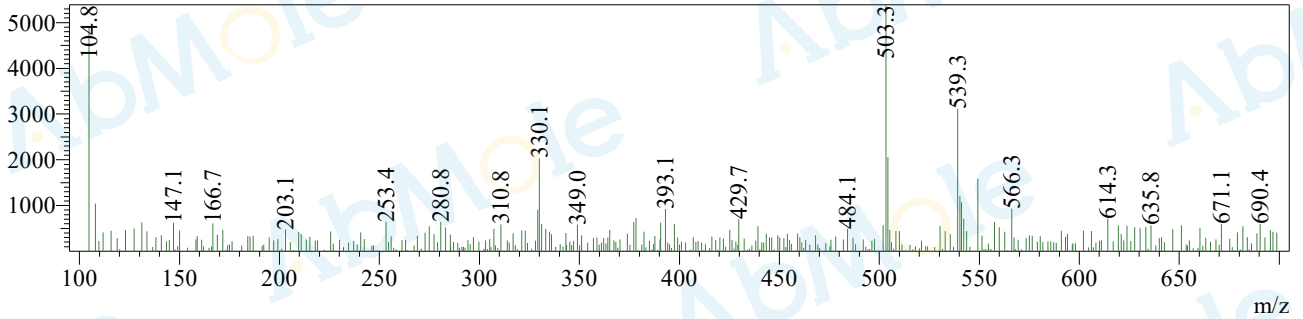
Rt=0.490min 负



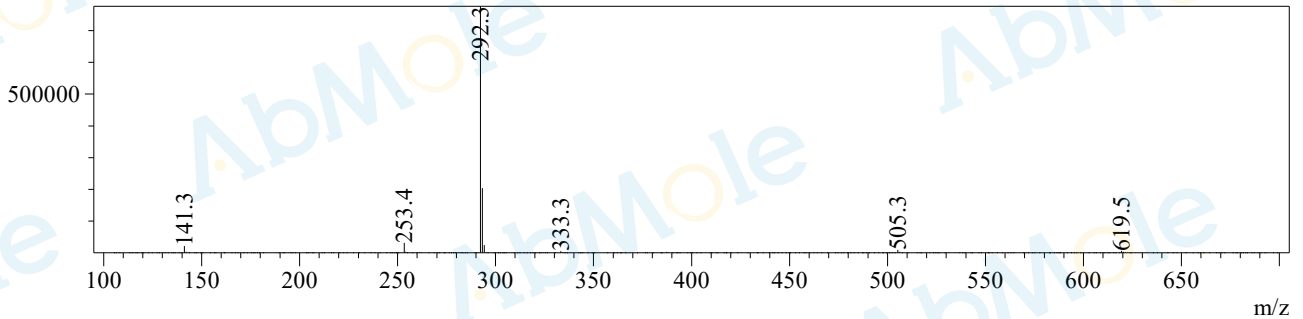
Rt=0.709min 正



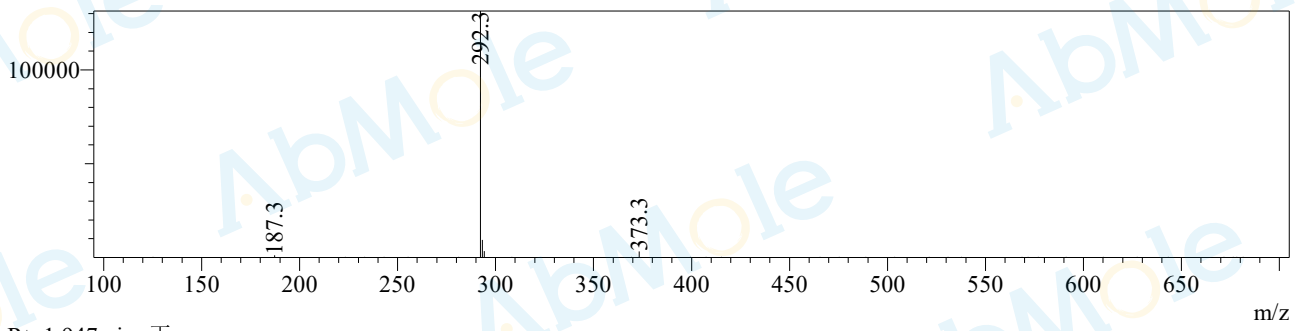
Rt=1.525min 负



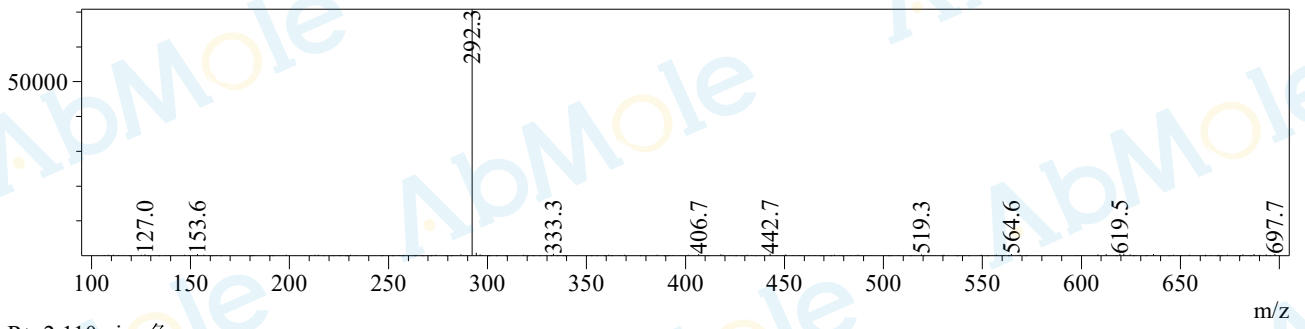
Rt=1.564min 正



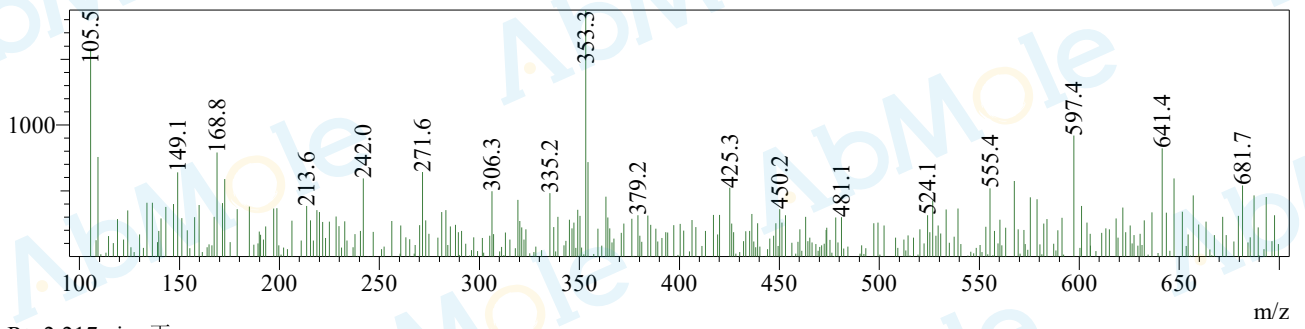
Rt=1.767min 正



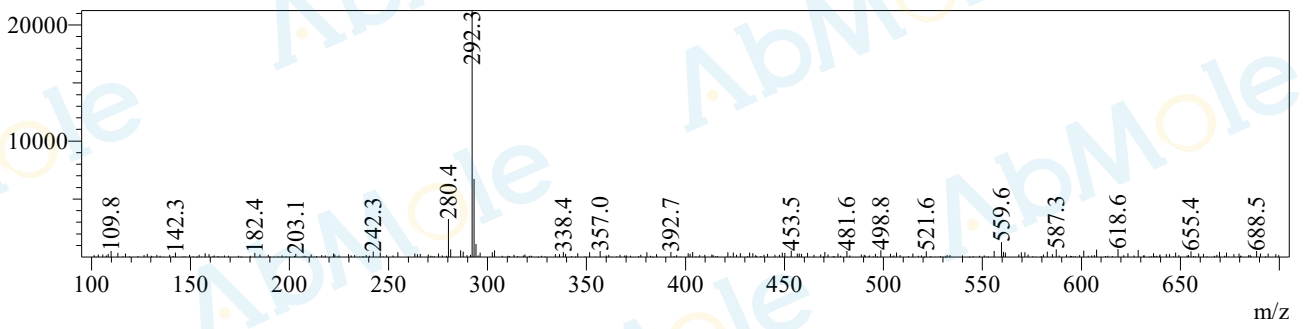
Rt=1.947min 正



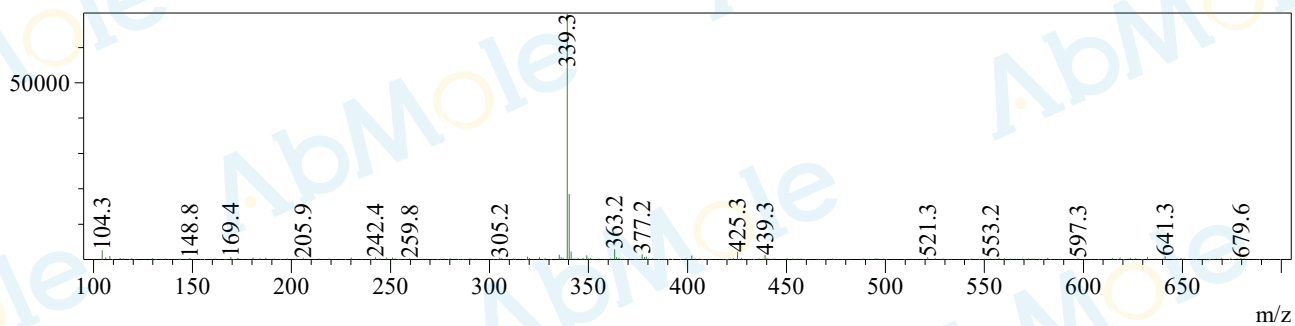
Rt=2.110min 负



Rt=2.217min 正



Rt=2.245min 负



Rt=2.402min 负

